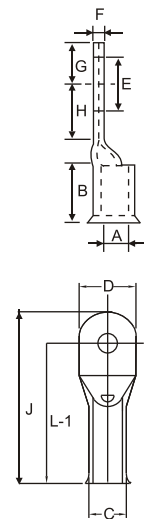


# Copper Cable Lugs (Bellmouth) & Transition in Line Connector

bellmouth cable lugs Type ACUSIB & transition connector Type ACILB

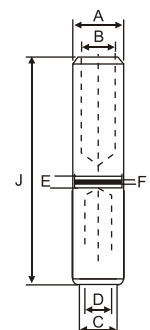
| CABLE SIZE mm <sup>2</sup> | STUD Ø mm | DIMENSIONS mm. |      |      |      |      |      |      |      | PART No.          |
|----------------------------|-----------|----------------|------|------|------|------|------|------|------|-------------------|
|                            |           | A              | C    | D    | B    | G    | H    | L-1  | J    |                   |
| 6                          | 5.3       | 3.3            | 5.5  | 10.0 | 13.0 | 6.0  | 7.0  | 24.5 | 30.5 | ACUSIB - 6 / 6    |
| 10                         | 6.4       | 4.3            | 6.8  | 11.0 | 12.0 | 6.0  | 7.0  | 24.5 | 30.5 | ACUSIB - 10 / 6   |
|                            | 8.4       | 4.3            | 6.8  | 13.0 | 12.0 | 6.0  | 7.0  | 24.5 | 30.5 | ACUSIB - 10 / 8   |
|                            | 10.5      | 4.3            | 6.8  | 14.5 | 13.0 | 10.0 | 12.0 | 28.5 | 38.5 | ACUSIB - 10 / 10  |
| 16                         | 6.5       | 5.3            | 8.0  | 11.0 | 12.5 | 7.0  | 9.0  | 26.0 | 33.0 | ACUSIB - 16 / 6   |
|                            | 8.4       | 5.3            | 8.0  | 13.0 | 13.5 | 7.0  | 9.0  | 26.5 | 33.5 | ACUSIB - 16 / 8   |
|                            | 10.5      | 5.3            | 8.0  | 15.5 | 14.0 | 10.0 | 10.0 | 28.5 | 38.5 | ACUSIB - 16 / 10  |
| 25                         | 6.4       | 6.6            | 9.5  | 13.5 | 14.5 | 7.0  | 12.0 | 32.0 | 39.0 | ACUSIB - 25 / 6   |
|                            | 8.4       | 6.6            | 9.5  | 13.5 | 14.5 | 7.0  | 12.0 | 32.0 | 39.0 | ACUSIB - 25 / 8   |
|                            | 10.5      | 6.6            | 9.5  | 16.0 | 15.0 | 12.0 | 14.0 | 35.5 | 47.5 | ACUSIB - 25 / 10  |
| 35                         | 6.4       | 7.9            | 11.0 | 16.0 | 14.0 | 7.0  | 12.0 | 32.0 | 39.0 | ACUSIB - 35 / 6   |
|                            | 8.4       | 7.9            | 11.0 | 16.5 | 16.0 | 7.0  | 10.0 | 32.0 | 39.0 | ACUSIB - 35 / 8   |
|                            | 10.5      | 7.9            | 11.0 | 17.5 | 16.0 | 10.0 | 12.0 | 32.0 | 44.0 | ACUSIB - 35 / 10  |
| 50                         | 8.4       | 10.0           | 12.4 | 18.0 | 18.0 | 12.0 | 12.0 | 41.0 | 53.0 | ACUSIB - 50 / 8   |
|                            | 10.5      | 10.0           | 12.4 | 18.0 | 18.0 | 12.0 | 14.0 | 41.5 | 53.5 | ACUSIB - 50 / 10  |
| 70                         | 10.5      | 11.5           | 14.7 | 21.0 | 22.0 | 12.0 | 14.0 | 44.0 | 56.0 | ACUSIB - 70 / 10  |
| 185                        | 10.5      | 19.5           | 5.5  | 36.0 | 34.0 | 17.0 | 17.0 | 66.0 | 83.0 | ACUSIB - 185 / 10 |
|                            | 13.0      | 19.5           | 25.5 | 36.0 | 34.0 | 17.0 | 17.0 | 66.0 | 83.0 | ACUSIB - 185 / 12 |
| 240                        | 15.0      | 21.5           | 27.0 | 39.0 | 36.0 | 17.0 | 19.0 | 74.0 | 91.0 | ACUSIB - 240 / 14 |



Material : Electrolytic Copper  
Finish : Electro Tinned

## COPPER TRANSITION IN LINE CONNECTOR

| CABLE SIZE mm <sup>2</sup> | DIMENSIONS mm. |      |      |      |      |     |     | PART No.    |
|----------------------------|----------------|------|------|------|------|-----|-----|-------------|
|                            | A              | B    | C    | D    | E    | F   | J   |             |
| 50-50                      | 14.5           | 10.0 | 14.5 | 10.0 | 12.0 | 8.0 | 70  | ACILB - 50  |
| 70-70                      | 16.5           | 11.5 | 16.5 | 11.5 | 12.0 | 8.0 | 70  | ACILB - 70  |
| 95-95                      | 19.0           | 13.5 | 19.0 | 13.5 | 15.0 | 8.0 | 90  | ACILB - 95  |
| 120-120                    | 21.0           | 15.5 | 21.0 | 15.5 | 15.0 | 8.0 | 90  | ACILB - 120 |
| 150-150                    | 23.5           | 17.0 | 23.5 | 17.0 | 15.0 | 8.0 | 90  | ACILB - 150 |
| 185-185                    | 26.0           | 19.0 | 26.0 | 19.0 | 15.0 | 8.0 | 90  | ACILB - 185 |
| 240-240                    | 29.0           | 21.5 | 29.0 | 21.5 | 15.0 | 8.0 | 90  | ACILB - 240 |
| 300-300                    | 32.0           | 24.5 | 32.0 | 24.5 | 15.0 | 8.0 | 90  | ACILB - 300 |
| 400-400                    | 38.5           | 27.5 | 38.5 | 27.5 | 15.0 | 8.0 | 120 | ACILB - 430 |
| 500-500                    | 42.0           | 31.0 | 42.0 | 31.0 | 15.0 | 8.0 | 120 | ACILB - 500 |
| 630-630                    | 44.0           | 34.5 | 44.0 | 34.5 | 15.0 | 8.0 | 120 | ACILB - 630 |



Material : Electrolytic Copper  
Finish : Electro Tinned