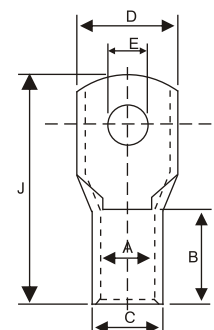


Copper Cable Lugs

BS 4579

with inspection hole Type ACUSI

| CABLE SIZE mm ² | STUD ø mm | DIMENSIONS mm. | | | | | PART No. |
|-------------------------------|--------------|-------------------|-----|-----|------|------|----------------|
| | | A | C | B | D | J | |
| 1.5 | M 4 | 1.8 | 3.7 | 5.5 | 8 | 17 | ACUSI - 1.5/4 |
| | M 5 | | | | 8 | 17 | ACUSI - 1.5/5 |
| | M 6 | | | | 10 | 19 | ACUSI - 1.5/6 |
| 2.5 | M 4 | 2.4 | 4.0 | 8 | 8 | 21.5 | ACUSI - 2.5/4 |
| | M 5 | | | | 10 | 21.5 | ACUSI - 2.5/5 |
| | M 5 | | | | 8 | 21.5 | ACUSI - 2.5/5A |
| | M 6 | | | | 10 | 24 | ACUSI - 2.5/6 |
| 4 | M 5 | 3.1 | 4.8 | 8 | 10 | 21 | ACUSI - 4/5 |
| | M 6 | | | | 10 | 21 | ACUSI - 4/6 |
| | M 5 | | | | 9 | 21 | ACUSI - 4/5A |
| | M 8 | | | | 12 | 26.5 | ACUSI - 4/8 |
| 6 | M 5 | 3.8 | 5.5 | 10 | 10 | 23 | ACUSI - 6/5 |
| | M 6 | | | | 10 | 23 | ACUSI - 6/6 |
| | M 6 | | | | 12 | 27 | ACUSI - 6/6A |
| | M 8 | | | | 12 | 27 | ACUSI - 6/8A |
| | M 10 | | | | 16.8 | 32 | ACUSI - 6/10 |
| 10 | M 5 | 4.5 | 6.2 | 10 | 12 | 25.5 | ACUSI - 10/5 |
| | M 6 | | | | 12 | 25.5 | ACUSI - 10/6 |
| | M 8 | | | | 12 | 27.5 | ACUSI - 10/8 |
| | M 10 | | | | 19 | 32 | ACUSI - 10/10 |
| | M 12 | | | | 19 | 36 | ACUSI - 10/12 |
| 16 | M 5 | 5.4 | 7.1 | 13 | 12 | 31 | ACUSI - 16/5 |
| | M 6 | | | | 12 | 31 | ACUSI - 16/6 |
| | M 8 | | | | 12 | 31 | ACUSI - 16/8 |
| | M 10 | | | | 19 | 35 | ACUSI - 16/10 |
| | M 12 | | | | 19 | 39 | ACUSI - 16/12 |
| 25 | M 6 | 6.8 | 8.8 | 14 | 13 | 33 | ACUSI - 25/6 |
| | M 8 | | | | 16 | 33 | ACUSI - 25/8 |
| | M 10 | | | | 16 | 36.5 | ACUSI - 25/10 |
| | M 12 | | | | 18 | 40 | ACUSI - 25/12 |



Material : Electrolytic Copper
Finish : Electro Tinned

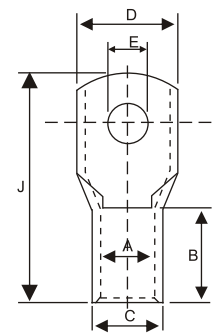
Continued...

Copper Cable Lugs

BS 4579

with inspection hole Type ACUSI

| CABLE SIZE mm ² | STUD Ø mm | DIMENSIONS mm. | | | | | PART No. |
|----------------------------------|--------------|-------------------|------|----|----|----|----------------|
| | | A | C | B | D | J | |
| 35 | M 6 | 8.2 | 10.6 | 14 | 15 | 36 | ACUSI - 35/6 |
| | M 6 | | | | 15 | 38 | ACUSI - 35/6A |
| | M 8 | | | | 15 | 36 | ACUSI - 35/8 |
| | M 8 | | | | 15 | 38 | ACUSI - 35/8A |
| | M 10 | | | | 15 | 40 | ACUSI - 35/10 |
| | M 10 | | | | 18 | 39 | ACUSI - 35/10A |
| | M 10 | | | | 18 | 41 | ACUSI - 35/10B |
| | M 12 | | | | 20 | 42 | ACUSI - 35/12 |
| 50 | M 6 | 9.5 | 12.4 | 18 | 18 | 45 | ACUSI - 50/6 |
| | M 8 | | | | 18 | 45 | ACUSI - 50/8 |
| | M 10 | | | | 18 | 45 | ACUSI - 50/10 |
| | M 12 | | | | 20 | 45 | ACUSI - 50/12 |
| 70 | M 6 | 11.2 | 14.7 | 20 | 21 | 52 | ACUSI - 70/6 |
| | M 8 | | | | 21 | 52 | ACUSI - 70/8 |
| | M 10 | | | | 21 | 52 | ACUSI - 70/10 |
| | M 12 | | | | 21 | 52 | ACUSI - 70/12 |
| | M 14 | | | | 28 | 55 | ACUSI - 70/14 |
| | M 16 | | | | 28 | 55 | ACUSI - 70/16 |
| 95 | M 8 | 13.5 | 17.4 | 22 | 25 | 57 | ACUSI - 95/8 |
| | M 10 | | | | 25 | 57 | ACUSI - 95/10 |
| | M 12 | | | | 25 | 57 | ACUSI - 95/12 |
| | M 14 | | | | 28 | 67 | ACUSI - 95/14 |
| | M 16 | | | | 28 | 60 | ACUSI - 95/16 |
| 120 | M 8 | 15.0 | 19.4 | 24 | 28 | 63 | ACUSI - 120/8 |
| | M 10 | | | | 28 | 63 | ACUSI - 120/10 |
| | M 12 | | | | 28 | 63 | ACUSI - 120/12 |
| | M 14 | | | | 28 | 63 | ACUSI - 120/14 |
| | M 16 | | | | 28 | 63 | ACUSI - 120/16 |
| 150 | M 8 | 16.5 | 21.2 | 29 | 30 | 71 | ACUSI - 150/8 |
| | M 10 | | | | 30 | 71 | ACUSI - 150/10 |
| | M 12 | | | | 30 | 71 | ACUSI - 150/12 |
| | M 14 | | | | 30 | 71 | ACUSI - 150/14 |
| | M 16 | | | | 30 | 71 | ACUSI - 150/16 |
| | M 20 | | | | 34 | 71 | ACUSI - 150/20 |



Material : Electrolytic Copper
Finish : Electro Tinned

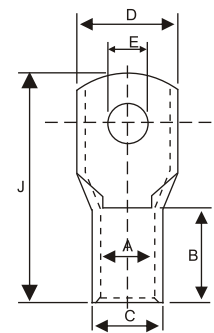
Continued...

Copper Cable Lugs

BS 4579

with inspection hole Type ACUSI

| CABLE SIZE mm ² | STUD ø mm | DIMENSIONS mm. | | | | | PART No. |
|----------------------------------|--------------|-------------------|------|----|------|-----|-----------------|
| | | A | C | B | D | J | |
| 185 | M 10 | 18.5 | 23.5 | 34 | 34 | 79 | ACUSI - 185/10 |
| | M 12 | | | | 34 | 79 | ACUSI - 185/12 |
| | M 14 | | | | 34 | 79 | ACUSI - 185/14 |
| | M 16 | | | | 34 | 79 | ACUSI - 185/16 |
| | M 20 | | | | 34 | 79 | ACUSI - 185/20 |
| 240 | M 10 | 21.0 | 26.5 | 39 | 38 | 93 | ACUSI - 240/10 |
| | M 12 | | | | 38 | 93 | ACUSI - 240/12 |
| | M 14 | | | | 38 | 93 | ACUSI - 240/14 |
| | M 16 | | | | 38 | 93 | ACUSI - 240/16 |
| | M 20 | | | | 38 | 93 | ACUSI - 240/20 |
| 300 | M 12 | 23.5 | 30.0 | 44 | 43 | 101 | ACUSI - 300/12 |
| | M 14 | | | | 43 | 101 | ACUSI - 300/14 |
| | M 16 | | | | 43 | 101 | ACUSI - 300/16 |
| | M 20 | | | | 43 | 101 | ACUSI - 300/20 |
| 400 | - | 26.8 | 34.8 | 47 | 50.1 | 116 | ACUSI - 400BL |
| | M 12 | | | | 50.1 | 116 | ACUSI - 400/12 |
| | M 14 | | | | 50.1 | 116 | ACUSI - 400/14 |
| | M 14 | | | | 50.1 | 114 | ACUSI - 400/14 |
| | M 16 | | | | 50.1 | 116 | ACUSI - 400/14A |
| | M 16 | | | | 50.1 | 105 | ACUSI - 400/16 |
| | M 20 | | | | 50.1 | 105 | ACUSI - 400/16A |
| | M 20 | | | | 50.1 | 116 | ACUSI - 400/20 |
| 500 | - | 30.0 | 39.0 | 52 | 56 | 126 | ACUSI - 500BL |
| | M 20 | 31.7 | 41.4 | | 59.5 | 126 | ACUSI - 500/20 |
| | M 20 | 30.0 | 39.0 | | 56.0 | 126 | ACUSI - 500/20A |
| | M 20 | 30.0 | 39.0 | | 56.0 | 126 | ACUSI - 500/20B |
| 630 | M 16 | 35.0 | 45.0 | 59 | 65.0 | 146 | ACUSI - 630/16 |
| | M 20 | | | | 65.0 | 146 | ACUSI - 630/20 |
| | - | | | | 65.0 | 146 | ACUSI - 630BL |
| | M 20 | 34.0 | 40.2 | 70 | 59.0 | 146 | ACUSI - 630/20B |
| | - | | | | 59.0 | 146 | ACUSI - 630 |
| | - | | | | 59.6 | 146 | ACUSI - 630 |
| 800 | - | 39 | 50.6 | 78 | 72.9 | 171 | ACUSI - 800BL |
| 1000 | - | 43 | 56.2 | 90 | 80.8 | 202 | ACUSI - 1000BL |



Material : Electrolytic Copper
Finish : Electro Tinned