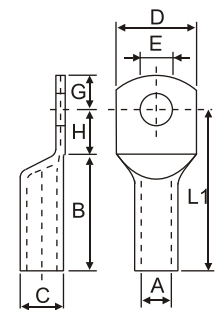


Copper Cable Lugs

DIN 46235

with or without inspection hole Type ACUSDT

CABLE SIZE mm ²	STUD ø mm	DIMENSIONS mm.								PART No.
		A	B	D	E	C	G	H	L1	
6	M 5	3.8	10	8.5	5.3	5.5	6.5	7.5	24	ACUSDT - 6/5
	M 6			8.5	6.4		7.5	8		ACUSDT - 6/6
	M 8**			13	8.4		10	10		ACUSDT - 6/8
10	M 5	4.5	10	9	5.3	6	7	8.5	27	ACUSDT - 10/5
	M 6			9	6.4		7.5	8.5		ACUSDT - 10/6
	M 8**			13	8.4		10	10		ACUSDT - 10/8
16	M 6	5.5	20	13	6.4	8.5	7.5	8	36	ACUSDT - 16/6
	M 8			13	8.4		10	10		ACUSDT - 16/8
	M 10			17	10.5		12	12		ACUSDT - 16/10
	M 12**			18	13		13	13		ACUSDT - 16/12
25	M 6	7	20	14	6.4	10	7.5	8	38	ACUSDT - 25/6
	M 8			16	8.4		10	10		ACUSDT - 25/8
	M 10			17	10.5		12	12		ACUSDT - 25/10
	M 12			19	13		13	13		ACUSDT - 25/12
35	M 6**	8.2	20	17	6.4	12.5	7.5	8	42	ACUSDT - 35/6
	M 8			17	8.4		10	10		ACUSDT - 35/8
	M 10			19	10.5		12	12		ACUSDT - 35/10
	M 12			21	13		13	13		ACUSDT - 35/12
	M 14**			21	15		14.5	14.5		ACUSDT - 35/14
50	M 8	10	28	20	8.4	14.5	10	10	52	ACUSDT - 50/8
	M 10			22	10.5		12	12		ACUSDT - 50/10
	M 12			24	13		13	13		ACUSDT - 50/12
	M 14**			24	15		14.5	14.5		ACUSDT - 50/14
	M 16			28	17		16	16		ACUSDT - 50/16
70	M 8	11.5	28	24	8.4	16.5	10	10	55	ACUSDT - 70/8
	M 10			24	10.5		12	12		ACUSDT - 70/10
	M 12			24	13		13	13		ACUSDT - 70/12
	M 14**			24	15		14.5	14.5		ACUSDT - 70/14
	M 16			30	17		16	16		ACUSDT - 70/16



Material : Electrolytic Copper
Finish : Electro Tinned

NOTE : ** Not standardized

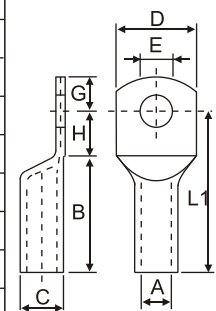
Continued...

Copper Cable Lugs

DIN 46235

with or without inspection hole Type ACUSDT

CABLE SIZE mm ²	STUD Ø mm	DIMENSIONS mm.								PART No.
		A	B	D	E	C	G	H	L1	
95	M 8**	13.5	35	28	8.4	19	12	12	65	ACUSDT - 95/8
	M 10			28	10.5		12	12		ACUSDT - 95/10
	M 12			28	13		13	13		ACUSDT - 95/12
	M 14**			28	15		14.5	14.5		ACUSDT - 95/14
	M 16			32	17		16	16		ACUSDT - 95/16
120	M 10	15.5	35	32	10.5	21	15	16	70	ACUSDT - 120/10
	M 12			32	13		16	17		ACUSDT - 120/12
	M 14**			32	15		18	19		ACUSDT - 120/14
	M 16			32	17		19	20		ACUSDT - 120/16
	M 20			38	21		21	22		ACUSDT - 120/20
150	M 10	17	35	34	10.5	23.5	15	16	78	ACUSDT - 150/10
	M 12			34	13		16	17		ACUSDT - 150/12
	M 14**			34	15		19	20		ACUSDT - 150/14
	M 16			34	17		19	20		ACUSDT - 150/16
	M 20			40	21		21	22		ACUSDT - 150/20
185	M 10	19	40	37	10.5	25.5	15	16	82	ACUSDT - 185/10
	M 12			37	13		16	17		ACUSDT - 185/12
	M 14**			37	15		19	20		ACUSDT - 185/14
	M 16			37	17		19	20		ACUSDT - 185/16
	M 20			40	21		21	22		ACUSDT - 185/20
240	M 12	21.5	40	42	13	29	16	17	92	ACUSDT - 240/12
	M 14**			42	15		19	20		ACUSDT - 240/14
	M 16			42	17		19	20		ACUSDT - 240/16
	M 20			45	21		21	22		ACUSDT - 240/20
300	M 14**	24.5	50	46	15	32	19	22	100	ACUSDT - 300/14
	M 16			46	17		19	22		ACUSDT - 300/16
	M 20			46	21		22	22		ACUSDT - 300/20
400	M 14**	27.5	70	54	15	38.5	25	25	115	ACUSDT - 400/14
	M 16			54	17		25	25		ACUSDT - 400/16
	M 20			54	21		25	25		ACUSDT - 400/20
500	M 16**	31	70	60	17	42	25	25	125	ACUSDT - 500/16
	M 20			60	21		25	25		ACUSDT - 500/20
625	M 16**	34.5	80	64	17	44	25	25	135	ACUSDT - 625/16
	M 20			64	21		25	25		ACUSDT - 625/20



Material : Electrolytic Copper
Finish : Electro Tinned

NOTE : ** Not standardized