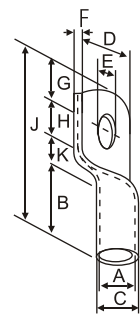


Copper Cable Lugs Economy Barrel

with or without inspection hole Type ACUS

CABLE SIZE mm ²	STUD ø mm	DIMENSIONS mm.									PART No.
		A	C	D	F	B	K	H	G	J	
2.5	5.2	2.4	4.0	8	0.8	7	3	5	5	10	ACUS - 2.5 / 5
4	6.5	3.1	4.8	11	1.0	7	3	6	6	22	ACUS - 4 / 6
6	6.5	3.8	5.5	11	1.0	9	3	6	6	24	ACUS - 6 / 6
10	6.5	4.4	6.2	11	1.3	9	3	6	6	24	ACUS - 10 / 6
16	6.5	5.3	7.1	11	1.6	12	4	8	6	30	ACUS - 16 / 6
25	6.5	7.0	9.0	13	2.0	12	5	12	8	37	ACUS - 25 / 6
35	6.5	8.2	10.0	15	2.0	12	5	12	8	37	ACUS - 35 / 6
	8.2	8.2	10.0	15	2.0	12	5	12	8	37	ACUS - 35 / 8
50	6.5	9.5	11.2	16	2.0	16	8	12	9	45	ACUS - 50 / 6
	8.2	9.5	11.2	16	2.0	16	8	12	9	45	ACUS - 50 / 8
	10.2	9.5	11.2	16	2.0	16	8	12	9	45	ACUS - 50 / 10
70	8.2	11.5	13.8	20	2.3	18	10	15	13	56	ACUS - 70 / 8
	10.2	11.5	13.8	20	2.3	18	10	15	13	56	ACUS - 70 / 10
	12.7	11.5	13.8	20	2.3	18	10	15	13	56	ACUS - 70 / 12
95	10.2	13.0	15.6	23	2.8	20	10	15	13	58	ACUS - 95 / 10
	12.7	13.0	15.6	23	2.8	20	10	15	13	58	ACUS - 95 / 12
120	10.2	15.0	17.8	26	3.0	22	10	16	14	62	ACUS - 120 / 10
	12.7	15.0	17.8	26	3.0	22	10	16	14	62	ACUS - 120 / 12
	16.2	15.0	17.8	26	3.0	22	10	16	14	62	ACUS - 120 / 16
150	10.2	16.5	19.6	28	3.6	26	11	18	15	70	ACUS - 150 / 10
	12.7	16.5	19.6	28	3.6	26	11	18	15	70	ACUS - 150 / 12
	16.2	16.5	19.6	28	3.6	26	11	18	15	70	ACUS - 150 / 16
185	12.7	18.5	22.0	32	4.0	28	13	21	21	83	ACUS - 185 / 12
	16.2	18.5	22.0	32	4.0	28	13	21	21	83	ACUS - 185 / 16
240	16.2	22.0	26.0	38	4.0	34	15	24	24	97	ACUS - 240 / 16
	20.3	22.0	26.0	38	4.0	34	15	24	24	97	ACUS - 240 / 20
300	16.2	24.5	28.7	42	4.7	36	16	25	26	103	ACUS - 300 / 16
	20.3	24.5	28.7	42	4.7	36	16	25	26	103	ACUS - 300 / 20
400	20.3	28.5	33.2	49	5.2	44	18	27	27	116	ACUS - 400 / 20
500	20.3	30.0	36.0	53	6.0	48	18	27	27	120	ACUS - 500 / 20
630	20.3	35.0	41.5	61	6.5	53	20	33	31	137	ACUS - 630 / 20
800	Blank	39.0	46.3	67	7.3	68	25	-	-	168	ACUS - 800 / B
1000	Blank	43.0	53.8	76	10.8	90	30	-	-	210	ACUS - 1000 / B



Material : Copper BS : 1977
Finish : Electro Tinned