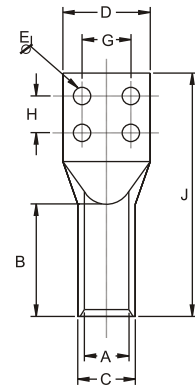


Copper Cable Lugs Four Hole & Two Hole

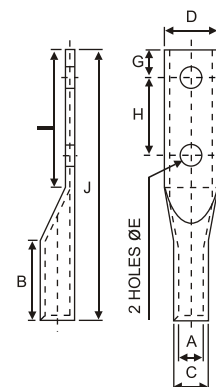
with or without inspection hole Type ACUS4H & ACUS2H

CABLE SIZE mm ²	DIMENSIONS mm.								PART No.
	A	C	D	E	B	G	H	J	
240	21	28	58	8.2	45	35	25	110	ACUS4H - 240 / 8 * 4H
240	21	28	58	10.3	45	35	25	110	ACUS4H - 240 / 10 * 4H
300	23.5	31	58	8.2	50	35	25	115	ACUS4H - 300 / 8 * 4H
300	23.5	31	58	10.3	50	35	25	115	ACUS4H - 300 / 10 * 4H
400	27	36.5	58	8.2	52	35	25	120	ACUS4H - 400 / 8 * 4H
400	27	36.5	58	10.3	52	35	25	120	ACUS4H - 400 / 10 * 4H
500	30	39	58	8.2	56	35	25	124	ACUS4H - 500 / 8 * 4H
500	30	39	58	10.3	56	35	25	124	ACUS4H - 500 / 10 * 4H
630	34	42	60	8.2	70	35	25	145	ACUS4H - 630 / 8 * 4H
630	34	42	60	10.3	70	35	25	145	ACUS4H - 630 / 8 * 4H
800	39	50.6	73	8.2	90	35	25	170	ACUS4H - 800 / 8 * 4H
800	39	50.6	73	10.3	90	35	25	170	ACUS4H - 800 / 10 * 4H
1000	43	56.2	81	8.2	100	35	25	200	ACUS4H - 1000 / 8 * 4H
1000	43	56.2	81	10.3	100	35	25	200	ACUS4H - 1000 / 10 * 4H



Material : Electrolytic Copper
Finish : Electro Tinned

CABLE SIZE mm ²	DIMENSIONS mm.								PART No.
	A	C	D	E	B	G	H	J	
10	4.6	6.6	15	10.5	30	14	19	82	ACUS2H- 10
16	5.5	7.5	15	10.5	30	14	19	82	ACUS2H- 16
25	7.2	9.5	15	10.5	33	14	19	86	ACUS2H- 25
35	8.5	11	16	10.5	33	14	19	85	ACUS2H- 35
50	9.5	12	17.5	13	35	14	44.5	112	ACUS2H- 50
70	11.2	14.5	21	13	45	14	44.5	115	ACUS2H- 70
95	13.3	17	25.5	13	47	14	44.5	135	ACUS2H- 95
120	15.2	19	27.5	13	50	14	44.5	137	ACUS2H- 120
150	16.8	21	31	13	50	17	44.5	142	ACUS2H- 150
185	18.5	23.5	34	13	50	17	44.5	213	ACUS2H- 185
240	22	28	40.5	13	57	17	44.5	336	ACUS2H- 240
300	24	30.5	43.5	13	60	20	44.5	162	ACUS2H- 300
400	26.5	34	49	13	66	21	44.5	168	ACUS2H- 400
500	30	40	56.5	13	73	21	44.5	189	ACUS2H- 500
630	35.5	45	64.5	13	70	23	44.5	195	ACUS2H- 630



Material : Electrolytic Copper
Finish : Electro Tinned

PS: DIMENSION H AVAILABLE AS PER REQUIREMENT