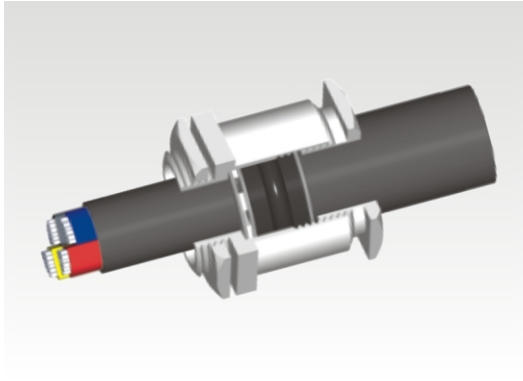
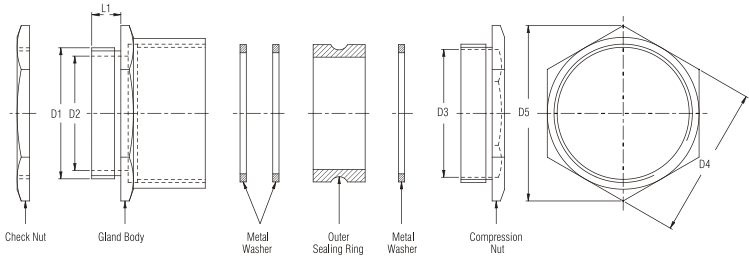


# Industrial Brass Cable Glands Siemens Type

single compression



Material : Brass  
 Plating : Nickel Plated  
 Entry Threads : BSC Standard  
 (Metric / also available)  
 Sealing Rubber Ring : Natural  
 Application : Used in normal climatic  
 condition for armoured &  
 unarmoured cables



Suitable Cable Overall Dia		Size		D1 Nipple Entry	D2 Dia.	D3 Dia.	D4 (A/F)	D5 (A/C)	L1 Length
From	To	mm	inches	Inches	Ø mm	Ø mm	mm	mm	mm
6.0	9.0	10	3/8"	5/8"	12.0	12.5	18.0	20.5	7.0
9.0	12.0	12	1/2"	5/8"	12.5	15.5	20.5	23.5	7.0
12.0	14.0	16	5/8"	3/4"	15.0	16.0	20.5	23.5	7.0*
14.0	16.0	19	3/4"	3/4"	15.0	18.0	23.0	26.0	7.0*
16.0	18.0	22	7/8"	3/4"	15.0	20.5		25.0	29.0*
18.0	21.5	25	1"	1"	21.0	23.5		28.5	32.0*
21.5	26.0	28	1 1/8"	1 1/8"	24.5	27.5		33.0	38.0*
26.0	31.0	32	1 1/4"	1 1/4"	27.0	31.5	37.0	43.0	11.0*
31.0	34.0	35	1 3/8"	1 3/8"	29.5	35.5	42.0	48.0	11.0*
34.0	38.0	38	1 1/2"	1 1/2"	33.0	38.0	45.0	52.0	11.0*
38.0	42.0	45	1 3/4"	1 3/4"	38.5	44.5	52.0	60.0	11.0*
42.0	48.0	50	2"	2"	45.0	52.0	58.0	67.0	11.0*
48.0	54.0	57	2 1/4"	2 1/4"	51.0	57.5	65.0	75.0	13.0
54.0	60.0	63	2 1/2"	2 1/2"	57.0	63.0	70.0	81.0	13.5
60.0	66.0	70	2 3/4"	2 3/4"	63.0	69.0	77.0	89.0	13.5
66.0	72.0	75	3"	3"	69.0	75.0	83.0	96.0	13.5
72.0	78.0	82	3 1/4"	3 1/4"	76.0	81.5	90.5	104.0	14.0
78.0	84.0	88	3 1/2"	3 1/2"	77.0	84.0	96.0	110.0	15.0
84.0	92.0	100	4"	4"	90.5	99.0	110.0	126.0	16.0

\* Gland body with long nipple length also available | Tolerance ± 1mm